

Substance Abuse Research Education and Training

New York Society of Addiction
Medicine Meeting
February 2, 2018



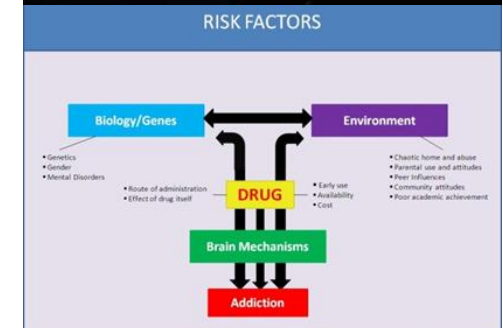
SARET Overview

- Partnership between Medicine, Nursing, Dentistry, Social Work and (now) Public Health
- Goal: activate students' interest in future careers in substance abuse research
- Two components:
 - Web based modular curriculum
 - Research mentorships (summer and year long)
- Year 11 of 15



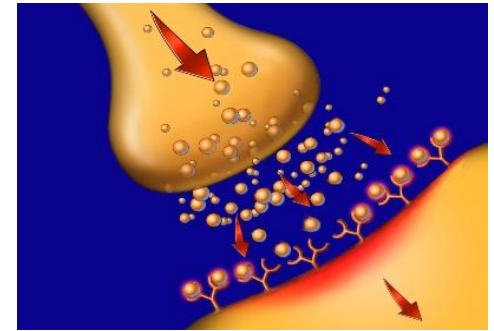
SARET Modules

	Module Descriptions
Exploring SUD Research	Features NIDA-funded investigators on tackling challenging problems in substance use disorders (SUD) through research, and introduces learners to framing research questions. Goal is to activate interest in the field and in the other modules.
Personal Impact	A man with a family history of alcohol use disorder details his development of alcohol dependence. Introduces concepts of diagnostic criteria and risk factors for SUD and teaches related concepts including relative and absolute risk.
Epidemiology	Focuses on population data, introduces basic epidemiology concepts, and explores causality vs. association using the controversy about marijuana as a gateway drug.



SARET Modules

	Module Descriptions
Neurobiology	Relates behavior of a cocaine-dependent man to the drug's neurophysiology. Describes reward, cue development and executive dysfunction. Investigators discuss the impact of bench research on SUD treatment.
Screening	Reviews standards of screening for substance abuse. Students consider how to study the effectiveness of routine screening for illicit drugs and alcohol. In-depth teaching of sensitivity, specificity, and predictive value.
Treatment Modalities	Reviews treatment modalities, with pharmacotherapy focus. Presents case of patient with prescription opioid dependence, reviews opioid agonist treatment effectiveness, and addresses use of RCTs and observational trials to test and compare treatments.



Dissemination

SARET
SUBSTANCE ABUSE
 RESEARCH EDUCATION AND TRAINING

All materials available at no cost

ABOUT THE PROGRAM

SARET—the Substance Abuse Research Education and Training Program—is an innovative program designed to stimulate learners’ interest and skills in exploring addiction research. Six interactive, self-directed online web modules offer state-of-the-art education on addiction and addiction research to students in the fields of medicine, nursing, dentistry, social work and public health.

SIX ONLINE LEARNING MODULES

CHECK IT OUT!

To access the modules, please visit <http://compass.iime.cloud/category/saret>
 Choose Non-NYU Login, then Register

For a 1-minute video overview, go to: tinyurl.com/saret-video

BENEFITS TO STUDENTS AND FACULTY

- Educates students on addiction and fundamentals of clinical research
- Provides engaging, self-directed learning activities
- Fills curricular gaps in SUD-related content
- Interprofessional learning emphasized throughout

CONTACT

Sewit Berekat, MPH
 SARET Program Manager
 Dept. of Population Health
 Sewit.Berekat@nyumc.org
 212.263.0889

SARET

Neurobiology of Substance Use Disorders

Substance Abuse Research Education and Training Program
 NYU Langone Medical Center

SARET

Screening for Substance Use Disorders

Substance Abuse Research Education and Training Program
 NYU Langone Health

SARET

Treatment Modalities for Substance Use Disorders

Substance Abuse Research Education and Training Program
 NYU Langone Medical Center

EXPLORING SUBSTANCE USE DISORDERS RESEARCH	Features NIDA-funded investigators on tackling challenging problems in substance use disorders (SUD) through research, and introduces learners to framing research questions. Goal is to activate interest in the field and in the other modules.
PERSONAL IMPACT	A man with a family history of alcoholism details his development of alcohol dependence. Introduces concepts of diagnostic criteria and risk factors for SUD and teaches related concepts including relative and absolute risk.
EPIDEMIOLOGY	Focuses on population data, introduces basic epidemiology concepts, and explores causality vs. association using the controversy about marijuana as a gateway drug.
NEUROBIOLOGY	Relates behavior of a cocaine-dependent man to the drug’s neurophysiology. Describes reward, cue development and executive dysfunction. Investigators discuss the impact of bench research on SUD treatment.
SCREENING	Reviews standards of screening for substance abuse. Students consider how to study the effectiveness of routine screening for illicit drugs and alcohol. In-depth teaching of sensitivity, specificity, and predictive value.
TREATMENT MODALITIES	Reviews treatment modalities, with pharmacotherapy focus. Presents case of patient with prescription opioid dependence, reviews opioid agonist treatment effectiveness, and addresses use of RCTs and observational trials to test and compare treatments.

SARET Overview: Participation to date

- 9741 module participants
 - 24,352 module completions
- 100 summer participants
 - 31 SOM, 29 COD, 23 CON, 17 SSW
- 8 year-long participants
 - 4 SOM, 2 COD, 1 CON, 1 SSW



Mentorship Program Components

- 8-week intensive mentorship experience
 - NIDA-funded SUD Investigators
 - Interprofessional mentor-mentee pairing
 - Weekly Interdisciplinary Seminars
 - Didactic & Student-led Discussions
 - Site Visits
 - Treatment Clinics, 12-Step-Programs, Harm Reduction Center
 - Annual Research Day



Mentee Successes

- Publications in field of SUD Research by past participants
 - 23 peer-reviewed articles
 - 28 oral and poster presentations
- 2 Abstracts Presented at 2017 AMERSA Conference
 - 2 medical students
- 4 Abstracts Presented at 2016 AMERSA Conference
 - 4 students representing each discipline
- Medical student won the “Best Abstract Award” in 2015
- AMERSA Travel Award
 - 2 past participants



“What I learned from my addiction research experience”

By Gabriel Ben-Dor, MS3

